

# LED Color Capable Sorter

*Function was upgraded!  
It doesn't miss sorted a glass, plastic and stone .*

LCS - 20T



## LED

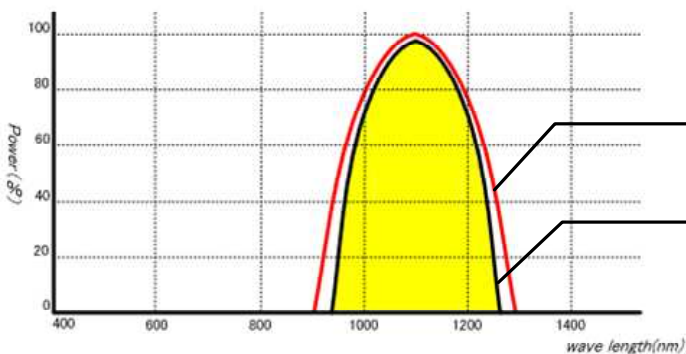
## Color-Capable

## Sorter

Using *near-infrared LED* for light source.

Wave-length graph

(It is displayed the maximum energy which is set as 100%)



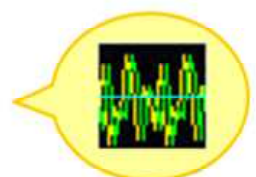
Stable light is supplied by special light source excellent in durability. Infrared LED with little quantity of heat is used to sort glass, stone and so on.

The wave range of Near Infrared LED

The wave range to reject glasses

**Auto Waveform** is included!!

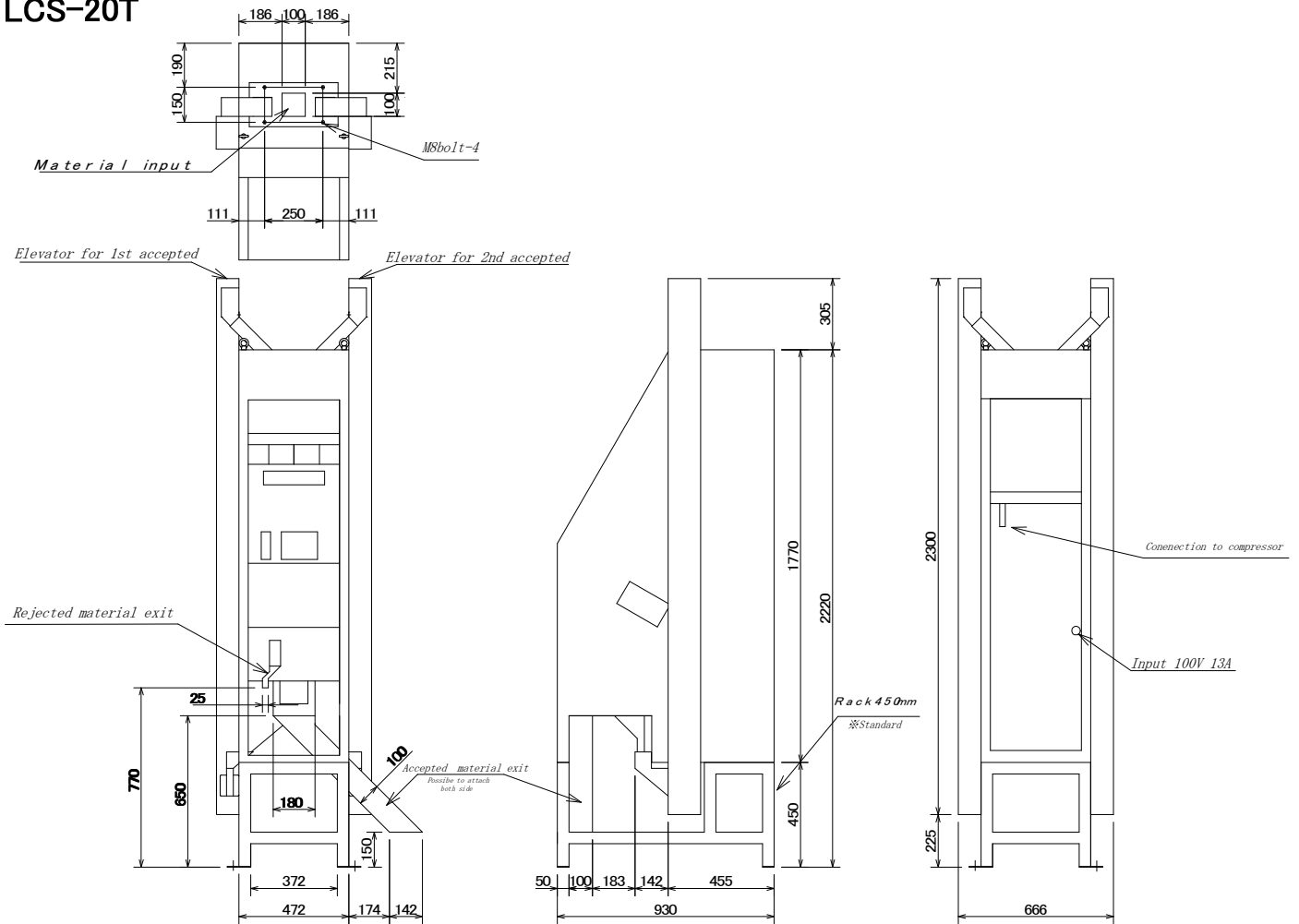
Waveform doesn't need to adjust anymore by installing the auto waveform.



Extended figure of waveform monitor

## 【Outline drawings】

### LCS-20T



## 【Specification】

| Model                 |             | LCS-20T   |
|-----------------------|-------------|---|
| Channel               | 1st sorting | 16  |
|                       | 2nd sorting | 4   |
| Main power            |             | AC220V 6A   |
| Compressor Capacity   |             | 1.5kw   |
| Dust cleaner capacity |             | -   |
| Piping (inch)         |             | 3/8   |
| Maximum Throughput    |             | 0.6~1.5 t/h   |
| Main use              |             | <ul style="list-style-type: none"> <li>• Colored grain is sorted (colored, glass, plastic, stone and so on)<br/>Available for sorting colored only.</li> <li>• Chalky is sorted (colored, glass, plastic, stone and so on) Available for sorting chalky only.</li> <li>• Nonglutinous is sorted from Glutinous [chalky] (chalky, glass, plastic, stone and so on)<br/>Available for sorting nonglutinous only.</li> </ul> <p>※ Please ask to dealer for details about brown rice wheat and buckwheat.</p> |

- ※ Air compressor, air drier and dust cleaner are optional parts.
- ※ Air compressor capacity and dust cleaner capacity will change by materials.
- ※ Process capacity changes with the state of material and sorting.
- ※ Outward form and specification may be changed without a prior notice for improvement.



Manufactured by  
Active K.T. CO., LTD.  
3-9-15 Minami-chou, Chuo-ku, Chiba-City  
Chiba 260-0842  
TEL: 043-300-7830 FAX: 043-266-1452

Sales by  
Active Marketing CO., LTD.  
2-22-13 Minami-chou, Chuo-ku, Chiba-City  
Chiba 260-0842  
TEL: 043-300-7831 FAX: 043-266-1462  
URL: <http://activecorp.co.jp/>